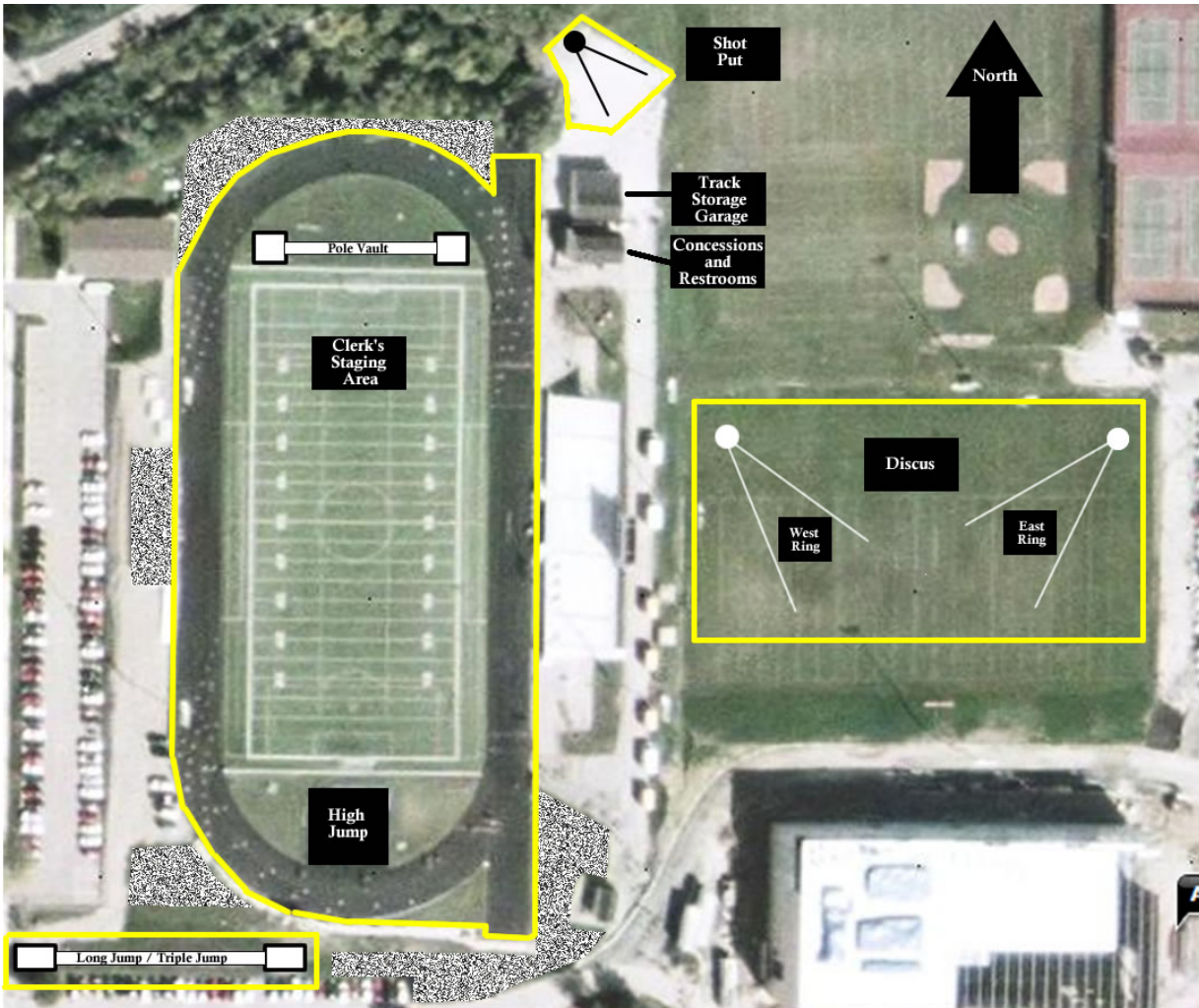


**31<sup>st</sup> ANNUAL  
TIGER TRACK & FIELD INVITATIONAL  
WHEATON WARRENVILLE SOUTH HIGH SCHOOL  
FRIDAY, APRIL 25, 2008**

**Grange Field Facility Map**



**Legend**



- Areas for Team Camps

**Competition Areas**

The Competition Areas are generally defined as (the areas inside the Yellow lines):

- The entire area enclosed by the fence surrounding the track
- Areas within 10 yards of throwing event areas
- Areas within 5 yards of horizontal jump venues

A reminder to all athletes:

- Uniforms may not be removed in competition areas
- No electronic devices are allowed in competitive areas

*\*\*\*Exceptions from these parameters (if necessary) will be announced at the coaches meeting.*

